

100th
ANNIVERSARY
since 1925

LUXMAN



*LUXMAN celebrated its 100th anniversary on June 13, 2025. From that day, the following twelve months have been designated as the “100th Anniversary Commemorative Period”.
During this time, Luxman is planning and developing a variety of commemorative products,
including exclusive models bearing the “CENTENNIAL” emblem, symbolizing 100 years of LUXMAN heritage.



LUXMAN, delivering true sound

Thanks to your support, LUXMAN is proud to celebrate our 100th anniversary in 2025. We extend our deepest gratitude to everyone who has supported us throughout this journey.

Our mission is to create exceptional audio products that embody LUXMAN's unique sense of immersion and artistic vision, enriching the lives of music lovers around the world. To achieve this, we have dedicated ourselves to faithfully expressing the passion and intentional techniques of artists, continuously pursuing products that resonate with the sensitivities of our customers and bring music to life in its purest form.

The ability to experience highly artistic musical works—crafted by countless artists—with an unparalleled level of realism is a cultural value that can only be appreciated through high-fidelity audio. We cherish this value and remain committed to preserving it for the future.

Furthermore, to enhance the precious moments spent with music, we have placed great emphasis on the aesthetics and intuitive operability of our products. Moving forward, we will continue to devote ourselves to creating meticulously designed products that offer both rich expression and the joy of ownership.

Thank you for your continued support.

Tatsuya Sueyoshi
President



1962



VACUUM TUBE INTEGRATED AMPLIFIER SQ5B

1964



VACUUM TUBE INTEGRATED AMPLIFIER SQ38D

1966



VACUUM TUBE POWER AMPLIFIER MQ36

1966



VACUUM TUBE POWER AMPLIFIER MB88

1967



VACUUM TUBE INTEGRATED AMPLIFIER SQ78

1975



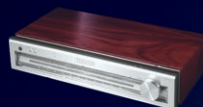
POWER AMPLIFIER M-6000

1975



ANALOG PLAYER PD121

1975



FM STEREO TUNER T-110

1976



VACUUM TUBE CONTROL AMPLIFIER CL32

1977



POWER AMPLIFIER 5M21

1983



CASSETTE DECK K-05

1984



VACUUM TUBE POWER AMPLIFIER MB-300

1988



D/A CONVERTER DA-07

1988



COMPACT DISC PLAYER D-007
INTEGRATED AMPLIFIER A-007

1989



INTEGRATED AMPLIFIER L-570

LUXMAN



Since 1925

1996



CONTROL AMPLIFIER C-10

1996



INTEGRATED AMPLIFIER L-505s

1997



COMPACT DISC PLAYER D-10

1997



POWER AMPLIFIER M-10

2001



DIGITAL UNIVERSAL PLAYER DU-10

2007



VACUUM TUBE INTEGRATED AMPLIFIER SQ-N100
COMPACT DISC PLAYER D-N100

2008



CD / SACD PLAYER D-08

2008



USB D/A CONVERTER DA-200

2010



ANALOG PLAYER PD-171

2011



HEADPHONE AMPLIFIER P-700u

2021



INTEGRATED AMPLIFIER L-595ASE

2021



MOVING COIL PHONO CARTRIDGE LMC-5

2021



POWER AMPLIFIER M-10X

2022



ANALOG PLAYER PD-191A

2022



INTEGRATED AMPLIFIER L-509Z

1969

1970

1971

1972

1974



VACUUM TUBE POWER AMPLIFIER MQ60



VACUUM TUBE INTEGRATED AMPLIFIER SQ38FD



INTEGRATED AMPLIFIER SQ507X



VACUUM TUBE CONTROL AMPLIFIER CL35II



VACUUM TUBE POWER AMPLIFIER MQ80

1979

1981

1982

1983

1983



INTEGRATED AMPLIFIER L-58A



INTEGRATED AMPLIFIER L-550



LUXKIT



VACUUM TUBE CONTROL AMPLIFIER CL36u



ANALOG PLAYER PD350

1990

1993

1994

1995

1995



COMPACT DISC PLAYER D-500X's



VACUUM TUBE POWER AMPLIFIER MA-88



POWER AMPLIFIER M-08



VACUUM TUBE INTEGRATED AMPLIFIER SQ-38s



POWER AMPLIFIER B-10

to 2025, a century of excellence

2002

2002

2005

2005

2006



HEADPHONE AMPLIFIER P-1



INTEGRATED AMPLIFIER L-509fSE



INTEGRATED AMPLIFIER L-590A



POWER AMPLIFIER B-1000f



CONTROL AMPLIFIER C-1000f

2012

2013

2013

2016

2019



CONTROL AMPLIFIER C-900u



POWER AMPLIFIER M-900u



VACUUM TUBE POWER AMPLIFIER MQ-300



INTEGRATED AMPLIFIER L-550AX



VACUUM TUBE CONTROL AMPLIFIER CL-1000

2023

2023

2024

2025

2025



CONTROL AMPLIFIER C-10X



NETWORK TRANSPORT NT-07



HEADPHONE AMPLIFIER P-100 CENTENNIAL



CD / SACD PLAYER D-100 CENTENNIAL



INTEGRATED AMPLIFIER L-100 CENTENNIAL

LUXMAN – Sound That Resonates with Life

Pursuing pure, uncolored sound, we strive to deliver music that deeply touches the listener's soul. This sound philosophy has been at the heart of Luxman for 100 years, ever since our founding in 1925.

“Great sound enriches life.”

We invite you to experience the harmonious connection between music and life, creating a space filled with warmth and comfort.



| | |
|------------------------------------|---------|
| Integrated Amplifier | p7 |
| Control Amplifier | p8 |
| Stereo Power Amplifier | |
| Vacuum Tube Control Amplifier | p9 |
| Vacuum Tube Stereo Power Amplifier | |
| NeoClassicoII | p9 |
| Analog Player | p10-p11 |
| Tonearm | |

| | |
|-----------------------|---------|
| Phono Cartridge | p11 |
| Phono Amplifier | |
| Super Audio CD Player | p12 |
| Compact Disc Player | |
| USB D/A Converter | p13 |
| Network Transport | |
| Headphone Amplifier | |
| Selector | p14 |
| Cable | p14-p15 |
| Accessories | |

INTEGRATED AMPLIFIER Class-A

L-100 CENTENNIAL

NEW



The L-100 CENTENNIAL, created to commemorate LUXMAN's 100th anniversary, is a pure Class A integrated amplifier conceived as a Class A power amplifier stage incorporated into LUXMAN's integrated amplifier platform, employing our company's proprietary core LIFES circuitry. By paralleling the FETs in the input stage of the error detection circuitry, our latest LIFES Version 1.1 further reduces distortion and noise. With a rated output of 20 W + 20 W (8 Ω) and 40 W + 40 W (4 Ω), the amplifier delivers richly textured, deeply immersive musical expression, while achieving excellent drivability through fundamentally competent power amplifier design with performance exceeding benchmarks. The volume control system features our new LECUA1000 electronically controlled attenuator, offering precise 88-step volume adjustment, integrated with a high-quality preamplifier employing discrete buffer circuitry. Signal clarity is preserved whilst providing the performance needed to powerfully drive subsequent stages.

SPECIFICATIONS

| | |
|-------------------------------|--|
| Rated output | 20 W+20 W (8 Ω) / 40 W+40 W (4 Ω) |
| Input sensitivity / impedance | PHONO (MM) 2.5 mV / 47 kΩ, PHONO (MC) 0.3 mV / 100 Ω, LINE 180 mV / 47 kΩ |
| Total harmonic distortion | 0.005 % (1 kHz / 8 Ω), 0.015 % (20 Hz to 20 kHz / 8 Ω) |
| S/N ratio | LINE 98 dB or more |
| Frequency response | LINE 20 Hz to 100 kHz (within -3 dB) |
| Power consumption | 260 W, 210 W (no signal), 0.5 W (at standby) |
| Dimensions | 440 (W) x 178 (H) x 454 (D) mm |
| Weight | 25.4 kg |

INTEGRATED AMPLIFIER

L-509Z



The L-509Z is a new model and "range topping flagship" of our latest Z-series integrated amplifiers. This "single-chassis separates" concept with high-end sound challenges the performance of stand-alone pre-amps and power amps, having undergone an astonishing evolution from earlier L-509 models. At the heart of the amplifier is our newly developed "LIFES™" amplification feedback engine and it is the first to be equipped with a discrete circuit configuration for each of the pre and power sections, bringing an overwhelming power of expression to bear for the new generation. In terms of functionality, it is equipped with a 7-segment LED volume level display, a built-in phono amplifier with a 3-stage gain switching circuit and an additional MIDDLE tone that is useful for adjusting the vocal range. The substantial chassis incorporates many design features from our ultimate M-10X power amplifier including the thick alloy top panel with hairline finish and ventilation ports.

SPECIFICATIONS

| | |
|-------------------------------|---|
| Rated output | 120 W+120 W (8 Ω) / 220 W+220 W (4 Ω) |
| Input sensitivity / impedance | PHONO (MM) 2.5 mV / 47 kΩ, PHONO (MC-H) 0.3 mV / 100 Ω, PHONO (MC-L) 0.1 mV / 40 Ω, LINE 180 mV / 47 kΩ |
| Total harmonic distortion | 0.006 % (1 kHz / 8 Ω), 0.06 % (20 Hz to 20 kHz / 8 Ω) |
| S/N ratio | LINE 106 dB or more |
| Frequency response | LINE 20 Hz to 150 kHz (within -3 dB) |
| Power consumption | 390 W, 130 W (no signal), 0.4 W (at standby) |
| Dimensions | 440 (W) x 193 (H) x 463 (D) mm |
| Weight | 29.4 kg |

L-509Z Black Edition CENTENNIAL



INTEGRATED AMPLIFIER

L-507Z



The L-507Z is the first model introduced to launch our new Z-series of integrated amplifiers. Influenced by the M-10X flagship stereo amplifier, it is equipped with our newly developed "LIFES" amplification feedback engine, an integral feature of the latest LUXMAN amplifiers. Our new LECUA*1000 electronically controlled attenuator, discrete buffer circuitry and other high-end specifications make this model a leap forward in musicality far beyond its class. In terms of functionality, the new 7-segment LED volume level display and the newly installed Φ4.4mm headphone output terminal with independent left and right ground wiring, etc., combine audio performance and convenience with ideal proportion and sophistication. It embodies a new style as an all-in-one amplifier.

SPECIFICATIONS

| | |
|-------------------------------|--|
| Rated output | 110 W+110 W (8 Ω) / 210 W+210 W (4 Ω) |
| Input sensitivity / impedance | PHONO (MM) 2.5 mV / 47 kΩ, PHONO (MC) 0.3 mV / 100 Ω, LINE 180 mV / 47 kΩ |
| Total harmonic distortion | 0.007 % (1 kHz / 8 Ω), 0.03 % (20 Hz to 20 kHz / 8 Ω) |
| S/N ratio | LINE 105 dB or more |
| Frequency response | LINE 20 Hz to 100 kHz (within -3 dB) |
| Power consumption | 350 W, 86 W (no signal), 0.4 W (at standby) |
| Dimensions | 440 (W) x 178 (H) x 454 (D) mm |
| Weight | 25.4 kg |

INTEGRATED AMPLIFIER

L-505Z



The long-selling L-505 series, known as the most accessible high-end amplifier, has undergone a highly anticipated full model change, evolving into the new-generation L-505Z. It features the newly developed LIFES amplification feedback engine, delivering natural, vibrant musicality with outstanding audio performance. Equipped with LUXMAN's proprietary LECUA high-purity volume control mechanism and a discrete buffer circuit in the preamp section—equivalent to higher-end models—it achieves a refined yet dynamic musical expression. The parallel push-pull output stage provides 100W + 100W (8Ω) and 150W + 150W (4Ω) of ample power. As a new benchmark that surpasses its class, the L-505Z is set to embark on a new long-running legacy.

SPECIFICATIONS

| | |
|-------------------------------|--|
| Rated output | 100 W+100 W (8 Ω) / 150 W+150 W (4 Ω) |
| Input sensitivity / impedance | PHONO (MM) 2.5 mV / 47 kΩ, PHONO (MC) 0.3 mV / 100 Ω, LINE 180 mV / 47 kΩ |
| Total harmonic distortion | 0.009 % (1 kHz / 8 Ω), 0.09 % (20 Hz to 20 kHz / 8 Ω) |
| S/N ratio | LINE 104 dB or more |
| Frequency response | LINE 20 Hz to 100 kHz (within -3 dB) |
| Power consumption | 330 W, 90 W (no signal), 0.5 W (at standby) |
| Dimensions | 440 (W) x 178 (H) x 454 (D) mm |
| Weight | 22.5 kg |

C-10X



The C-10X is our new flagship control amplifier, developed with the aim of achieving the overwhelming audio quality that next-generation components should have in preparation for LUXMAN's 100th anniversary in 2025. Our newly developed "LIFES" amplification feedback engine is fully balanced throughout the preamplifier stage, with four modules operating under completely identical conditions. The volume control section has evolved, enabling accurate, smooth and comforting volume adjustments using LECUA-EX, the latest version of LUXMAN's LECUA electronically controlled attenuator directly connected to the preamplifier section, its rotary encoder operating in fine steps of 0.5dB. The C-10X is the best partner for the M-10X, and as a controller device that brings out high-fidelity performance from the many power amplifiers available on the market today, it delivers the highest quality sound that will satisfy the most demanding tastes.

SPECIFICATIONS

| | |
|-------------------------------|---|
| Input sensitivity / impedance | LINE 180 mV / 45 kΩ, BAL LINE 180 mV / 90 kΩ |
| Output voltage / impedance | LINE 1 V / 90 Ω, Maximum 14.1 V, BAL LINE 1 V / 180 Ω, Maximum 28.7 V |
| Total harmonic distortion | LINE 0.005 % (20 Hz to 20 kHz), BAL LINE 0.003 % (20 Hz to 20 kHz) |
| Frequency response | 20 Hz to 20 kHz (+0, -0.1 dB), 5 Hz to 110 kHz (+0, -3 dB) |
| S/N ratio | LINE 129 dB, BAL LINE 132 dB (Maximum output) |
| Power consumption | 40 W, 2.6 W (at standby) |
| Dimensions | 440 (W) x 130 (H) x 434 (D) mm |
| Weight | 19.8 kg |

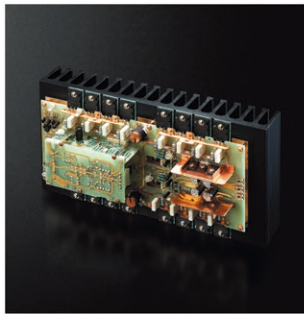
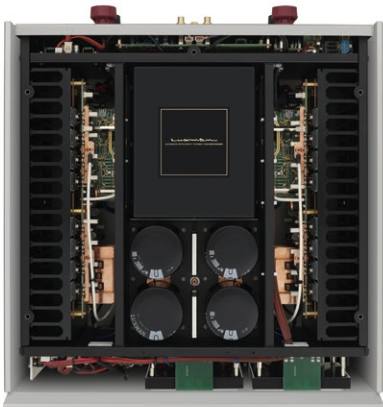
M-10X



In anticipation of the 100th anniversary of our founding in 2025, returning to the fundamentals of music playback, LUXMAN's milestone and reference to the future has finally been realized. We present the new generation M-10X flagship stereo power amplifier. The amplifier section is equipped with our newly developed "LIFES" amplification feedback engine that realizes "musical density and dynamism" with "strong speaker drivability and a vast sound stage". The M-10X, which has acquired overwhelming high performance, can make all kinds of speakers develop rich musicality, full of vitality, heralding the beginning of a new era for LUXMAN.

SPECIFICATIONS

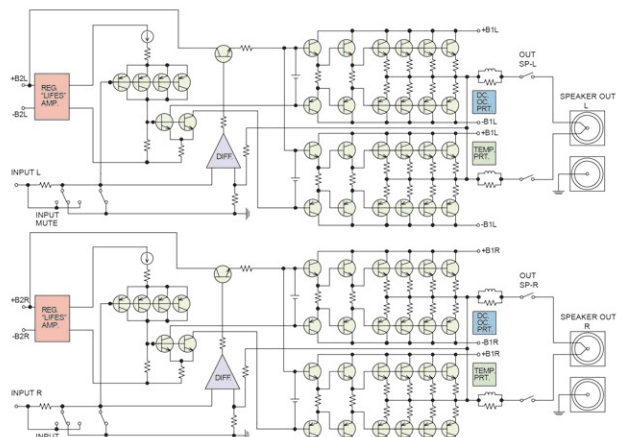
| | |
|---------------------------|--|
| Rated output | 150 W+150 W (8 Ω) / Stereo, 300 W+300 W (4 Ω) / Stereo, 600 W (8 Ω) / Monaural |
| Maximum power output | 1200 W+1200 W (1 Ω) / Stereo, 2400 W (2 Ω) / Monaural |
| Input sensitivity | 1.24 V / 150 W (8 Ω) |
| Input impedance | Unbalanced 51kΩ, Balanced 28kΩ |
| Total harmonic distortion | 0.003 % or less (1 kHz / 8 Ω), 0.04 % or less (20 Hz to 20 kHz / 8 Ω) |
| Frequency response | 20 Hz to 20k Hz (+0, -0.1 dB), 1 Hz to 130 kHz (+0, -3 dB) |
| S/N ratio | 117 dB |
| Power consumption | 540 W, 290 W (no signal), 1.0 W (at standby) |
| Dimensions | 440 (W) x 224 (H) x 488 (D) mm |
| Weight | 48.4 kg |



An amplified feedback engine that brings music to life

LIFES Version 1.0

With our 100th anniversary coming up in 2025, LUXMAN has revamped our ODNF amplifier circuitry, which has long supported the sound quality of our amplifier products since 1999. We have completed a new amplification feedback method with LIFES that achieves excellent audio performance. LIFES is based on the technological concept of the groundbreaking ODNF amplifier circuitry, which achieves excellent static characteristics without feeding back the actual musical component of the signal to the main amplifier, realizing the natural tonality of a non-feedback amplifier. Upgraded and expanded, the circuit has been reviewed from scratch and ideal amplifier performance selected components and repeated listening and rigorous examination, we have perfected a level of performance and sound quality suitable for us in LUXMAN's next-generation audio products.



M-10X Output block diagram

VACUUM TUBE CONTROL AMPLIFIER

CL-38uC



The CL-38uC retains a traditional look with its wooden case but the body width is now expanded to a LUXMAN standard size of 440mm (the CL-38u had a width of 400mm) and balanced inputs have been added as our customers have requested. Nichicon-made high voltage metalized polypropylene film coupling capacitors have been introduced for a supple, natural tone.

SPECIFICATIONS

| | |
|-------------------------------|---|
| Input sensitivity / impedance | PHONO (MM) 2 mV / 47 kΩ, PHONO (MC high) 0.3 mV / 100 Ω, PHONO (MC low) 0.08 mV / 30 Ω, LINE 190 mV / 50 kΩ |
| Output voltage / impedance | Rated 1V / 300Ω |
| Total harmonic distortion | 0.006 % (1 kHz), 0.06 % (20 Hz to 20 kHz) |
| S/N ratio | PHONO (MM) 68 dB or more, PHONO (MC high) 63 dB or more, PHONO (MC low) 60 dB or more, LINE 100 dB or more |
| Frequency response | PHONO 20 Hz to 20 kHz (±0.5 dB), LINE 10 Hz to 70 kHz (Within -3 dB) |
| Power consumption | 35 W |
| Dimensions | 440 (W) x 169 (H) x 307 (D) mm |
| Weight | 13.3 kg |

VACUUM TUBE STEREO POWER AMPLIFIER

MQ-88uC



*The printed markings on the glass surface of the vacuum tube may be subject to change.

Launched as a matching complement to the CL-38uC, both the interior and exterior of our previous MQ-88u model has been upgraded with many customizations and reborn as the MQ-88uC. Our well-established triode power amp stage inherits that robust mid-to-low range. To enable more powerful reproduction with lower distortion, independent speaker terminals are provided for 4Ω, 8Ω and 16Ω speakers. In addition, the MQ-88uC is full of new charm, both inside and out, such as our adoption of high voltage Nichicon film capacitors and the deep brown exterior finish.

SPECIFICATIONS

| | |
|-------------------------------|---|
| Rated output | 25 W+25 W (4 Ω, 8 Ω, 16 Ω) |
| Input sensitivity / impedance | 890 mV / 32 kΩ |
| Total harmonic distortion | 0.1 % (1 kHz / 1 W), 0.5 % (20 Hz to 20 kHz / 1 W) |
| S/N ratio | 105 dB |
| Frequency response | 20 Hz to 20 kHz (+0, -0.2 dB), 10 Hz to 100 kHz (+0, -3 dB) |
| Power consumption | 170 W, 140 W (no signal) |
| Dimensions | 440 (W) x 184 (H) x 230 (D) mm |
| Weight | 16.1 kg |



NeoClassico II ——— Return home to a space filled with beautiful sound

VACUUM TUBE INTEGRATED AMPLIFIER

SQ-N150



*The product comes with a bonnet.

*The printed markings on the glass surface of the vacuum tube may be subject to change.

Our NeoClassico line features this compact and stylish A4 sized vacuum tube integrated amplifier at the core of the series, offering an attractive level of audio quality. It has undergone a complete transformation. With newly designed components suitable for a high-end model, while staying true to our original concept. Simplified circuitry, utilizing EL84 vacuum tubes in push-pull configuration, produces an output of 10 watts per channel, placing importance on enjoying this unit's excellence for an extended lifespan. Improvements, including the addition of a new analog level meter, balance adjustment and MC cartridge input, further enhance this complete integrated amplifier.

SPECIFICATIONS

| | |
|-------------------------------|--|
| Rated output | 10 W+10 W (6 Ω) |
| Input sensitivity / impedance | PHONO (MM) 3.0 mV / 47 kΩ, PHONO (MC) 0.33 mV / 100 Ω, LINE 180 mV / 47 kΩ |
| Total harmonic distortion | 1 % or less (1 kHz / 6 Ω) |
| S/N ratio | LINE 95 dB or more |
| Frequency response | LINE 20 Hz to 80 kHz (within -3 dB) |
| Power consumption | 98 W |
| Dimensions | 297 (W) x 188 (H) x 251 (D) mm |
| Weight | 12.4 kg |

BELT DRIVE ANALOG PLAYER

PD-191A



*Dust cover is sold separately

The PD-191A is a belt-drive analog turntable featuring a brushless DC motor with high-precision PID control, ensuring smooth and accurate rotation while driving a heavy, high-inertia platter. Its tonearm, the LTA-710, is an entirely new design developed in collaboration with SAEC, incorporating a knife-edge bearing with exceptional initial sensitivity. With an effective length of 10 inches, it minimizes tracking error and enhances damping against record surface fluctuations.

SPECIFICATIONS

Turntable drive section

| | |
|-----------------------------|---|
| Drive system | Belt drive system |
| Motor | Brushless DC motor with PID control |
| Materials | Machined aluminum, Surface finish: Diamond cut |
| Revolution | 33 1/3 rpm, 45 rpm, 78 rpm (3 speeds selectable) |
| Revolution adjustment range | ±6 % (each rotation speed adjustable independently) |
| Wow and flutter | 0.04 % or less (W.R.M.S.) |
| Weight | 5.2 kg (platter) |

Tonearm section

| | |
|---------------------------|---|
| Type | Static balanced, S shaped, universal type |
| Bearing | Concealed vertical knife edge |
| Effective length | 256 mm |
| Overhang | 16 mm |
| Tracking error angle | +1.07° to -1.52° |
| Suitable cartridge weight | 4 to 11 g (Including head shell 17 to 24 g) |
| Adjustable height range | 22 mm |
| Anti-skating bia | 0 to 4 g |

Main unit

| | |
|-------------------|--|
| Power consumption | 6 W |
| Dimensions | 491 (W) x 128 (up to top face of platter) (H) x 399 (D) mm |
| Weight | 24.8 kg |

BELT DRIVE ANALOG PLAYER

PD-151 MARK II



*Dust cover is sold separately

Our PD-151 MARK II turntable succeeds the PD-151, launched in 2018, and is equipped with an original, static balance tone arm that adopts knife edge technology developed by SAEC and exhibits excellent initial sensitivity. By giving the arm a universal connection, it is easy to install a replacement cartridge. Equipped with a high-torque, brushless DC motor, precise platter rotation speed is controlled by a 3 stage switching system (33 1/3, 45, 78 rpm). This new standard, belt-drive analog player has evolved further based on the reliable performance and functional beauty of its predecessor.

SPECIFICATIONS

Turntable drive section

| | |
|-----------------------------|---|
| Drive system | Belt drive system |
| Motor | Brushless DC motor with PID control |
| Materials | Machined aluminum, Surface finish: Diamond cut |
| Revolution | 33 1/3 rpm, 45 rpm, 78 rpm (3 speeds selectable) |
| Revolution adjustment range | ±6 % (each rotation speed adjustable independently) |
| Wow and flutter | 0.04 % or less (W.R.M.S.) |
| Weight | 4.0 kg (platter) |

Tonearm section

| | |
|---------------------------|---|
| Type | Static balanced, S shaped, universal type |
| Bearing | Concealed knife edge |
| Effective length | 222.5 mm |
| Overhang | 18 mm |
| Tracking error angle | ±3° or less |
| Suitable cartridge weight | 4 to 10 g (Including head shell 17 to 23 g) |
| Adjustable height range | 15 mm |
| Anti-skating bia | 0 to 4 g |

Main unit

| | |
|-------------------|--|
| Power consumption | 6 W |
| Dimensions | 465 (W) x 133 (up to top face of platter) (H) x 393 (D) mm |
| Weight | 15.8 kg |

PD-151 MARK II Black Edition CENTENNIAL



*Dust cover is sold separately



UNIVERSAL TONEARM

LTA-710



The LTA-710 is our newly designed universal static balance tonearm jointly developed by LUXMAN in partnership with the audio brand SAEC. The bearing structure features a knife-edge design assembled with high mechanical precision, achieving excellent initial sensitivity. By setting the effective length to 10 inches, we have suppressed tracking errors and improved braking performance against surface runout. A machined aluminum head shell with the LUXMAN logo is included as standard, using 7-N Class D.U.C.C* for the lead wires. In addition, by combining this tonearm with our optional OPPD-AB7 arm base, it is possible to upgrade LUXMAN PD-171A and PD-171AL models, which are still popular today.

SPECIFICATIONS

| | |
|-----------------------------|--|
| Type | Static balanced, S shaped, universal type |
| Bearing | Knife edge |
| Effective length | 256 mm |
| Tracking error angle | +1.07° to -1.52° |
| Overhang | 16 mm |
| Effective mass | 13.73 g |
| Applicable cartridge weight | 4 to 11 g (including headshell 17 to 24 g) |
| Adjustable height range | 22 mm |
| Anti-skating | 0 to 4 g |
| Length | 278.7 mm |
| Weight | 713 g |

LMC-5



The LMC-5 is LUXMAN's latest original cartridge system, the first for almost 40 years since the LMC-1 was launched in 1981 and the LMC-2 in 1982. For the moving coil generator engine, we selected a cross-shaped iron core that has a compact magnetic circuit and improved efficiency, and for the vibration system, we selected a combination of an aluminum alloy cantilever that boasts excellent tracing ability and a Shibata stylus. Furthermore, thanks to our unique housing structure, which we have perfected through repeated auditions, we have created a cartridge that delivers natural, relaxed tone.

SPECIFICATIONS

| | |
|---|---|
| Type | MC (MOVING COIL) |
| Internal impedance | 4.7 Ω (1 kHz) |
| Tracking force | 2.1 to 2.3 g (2.2 g as standard) |
| Output voltage | 0.4 mV (1kHz, 3.54 cm / sec.) |
| Frequency response | 10 Hz to 35 kHz |
| Channel separation / balance | 28 dB (1 kHz) / 0.5 dB (1 kHz) |
| Recommended load impedance (When head amplifier is connected) | 40 Ω or more |
| Recommended load impedance (When step-up transformer is connected) | 2.5 to 10 Ω |
| Dynamic compliance | 8 x 10 ⁻⁶ cm / dyne (100 Hz) |
| Stylus | Solid diamond / SHIBATA needle |
| Cantilever | Φ0.5 mm aluminum |
| Magnet | Samarium-cobalt magnet BH20 |
| Coil | 30 μm UEW |
| Body | Aluminum A6063 |
| Dimensions | 17.0 (W) x 18.3 (H) x 21.3 (D) mm |
| Weight | 8.5 g |

OPTIONAL PARTS FOR ANALOG PLAYERS

Accessories for PD-191A / PD-151 MARK II / PD-151 / PD-171A / PD-171AL / PD-171 (available service parts)

| | | | | | | |
|---|--|---|---|--|---|--|
| <p>Dust cover</p> <p>OPPD-DSC191 [PD-191A] [PD-171A] [PD-171AL] 4mm thick acrylic, cam support hinges</p> | <p>OPPD-DSC151 [PD-151 MARKII] [PD-151] 4mm thick acrylic, cam support hinges</p> | <p>Heavy weight</p> <p>OPPD-HW3 [PD-191A] For cartridges of 10 to 19g (23 to 32g including headshell)</p> | <p>OPPD-HW2 [PD-151 MARKII] For cartridges of 9 to 19g (22 to 32g including headshell)</p> | <p>Headshell</p> <p>OPPD-SH3 [PD-191A] [PD-151 MARKII] [PD-151] [PD-171A] [PD-171AL] [PD-171] Machined aluminum light weight type weight 13g (including D.U.C.C. lead wires)</p> | <p>OPPD-SH2 [PD-191A] [PD-151 MARKII] [PD-151] [PD-171A] [PD-171AL] [PD-171] Machined aluminum light weight type weight 13g (including OFC lead wires)</p> | <p>Rubber drive belt [PD-191A] [PD-151 MARKII] [PD-151] [PD-171A] [PD-171AL] [PD-171]</p> |
| <p>Replacement arm base with brass chrome-plated finish</p> | | | | | | |
| <p>OPPD-AB1 [PD-191A] [PD-171A] [PD-171AL] For SME 3009R/3010R, Series M2-9R/9/10/IV/V</p> | <p>OPPD-AB2 [PD-191A] [PD-171A] [PD-171AL] For FR 64/64S/64FX, IKEDA IT-345</p> | <p>OPPD-AB3 [PD-191A] [PD-171A] [PD-171AL] For SAEC WE-308</p> | <p>OPPD-AB4 [PD-191A] [PD-171A] [PD-171AL] For SAEC WE-407/23</p> | <p>OPPD-AB5 [PD-191A] [PD-171A] [PD-171AL] For ORTOFON 212S/212D</p> | <p>OPPD-AB6 [PD-191A] [PD-171A] [PD-171AL] DIY universal tonearm base</p> | |
| <p>Long arm base OPPD-AB11L [PD-191A] For SME 3012 (12 inches)</p> | <p>Long arm base OPPD-AB12L [PD-191A] For ORTOFON 309S/309D</p> | <p>OPPD-AB1</p> | <p>OPPD-AB11L</p> | <p>OPPD-DSC191</p> | <p>OPPD-SH3</p> | |

PHONO AMPLIFIER

E-07



The E-07 is a full-sized semiconductor phono equalizer amplifier designed for precise amplification of delicate vinyl signals. It supports balanced connections and offers six-step impedance selection for MC cartridges and four-step selection for MM cartridges. The amplifier circuit strictly adheres to the RIAA equalization curve, featuring a four-parallel FET input stage for ultra-low noise performance. It incorporates Luxman's traditional high S/N, NF-type amplification circuit. The power supply design employs a three-transformer separate structure, completely isolating the power circuits for indicator control, relay drive, and LR channels at the transformer level to prevent mutual interference.

SPECIFICATIONS

| | |
|---------------------------------|--|
| Circuiting system | NF type equalizer (RIAA) |
| MC step-up transformer | Super permalloy core x 4 |
| Input sensitivity | MM 3.2 mV, MC-H 0.37 mV, MC-L 0.12 mV |
| Input impedance | MC 4.7 / 10 / 40 Ω (MC-L), 100 / 300 / 1 k Ω (MC-H) MM 34 k / 47 k / 56 k / 100 k Ω |
| Gain | MM 38 dB, MC-H 57 dB, MC-L 66 dB |
| Rated output / output impedance | 250 mV / Unbalanced 300 Ω, Balanced 600 Ω |
| Load capacity | MM 0 / 100 / 220 / 320 pF |
| RIAA response | MM 20 to 20 kHz (±0.1 dB), MC 20 to 20 kHz (±0.3 dB) |
| Total harmonic distortion | 0.003% |
| S/N ratio (IHF-A) | MM 88 dB, MC-H 81 dB, MC-L 78 dB |
| Power consumption | 13W |
| External dimensions | 440(W) x 92(H) x 407(D) mm |
| Weight | 13.2 kg |

PHONO AMPLIFIER

E-250



The E-250 allows the listener to fine tune settings for any recorded performance, releasing the expression engraved in the grooves of vinyl discs and creating a profound musical impression. The rear panel is equipped with an impedance selector and a load capacity selector to match the characteristics of the selected cartridge, exploiting the output to its full potential. The E-250 features a step-up transformer with a 2-stage gain sector with independent left and right circuitry. The super permalloy core supports even low impedance MC cartridges. This creates a rich and expressive musicality that is a unique characteristic of this type of transformer.

SPECIFICATIONS

| | |
|-------------------------------|--|
| Circuiting system | NF type equalizer (RIAA) |
| Input sensitivity / impedance | MM 3.2 mV / 34 k Ω, 47 k Ω, 56 k Ω, 100 k Ω (switchable) MC high 0.37 mV / 40 Ω, MC low 0.12 mV / 2.5 Ω |
| Gain | MM 38 dB, MC high 57 dB, MC low 66 dB |
| Output voltage / impedance | 250 mV / 300 Ω |
| S/N ratio | MM 90 dB, MC high 83 dB, MC low 80 dB |
| Power consumption | 7 W |
| Dimensions | 364 (W) x 81 (H) x 274 (D) mm |
| Weight | 4.3 kg |

D-100 CENTENNIAL

NEW



The D-100 CENTENNIAL is both a flagship SACD/CD player and a 100th anniversary commemorative model. It features the latest top-end BD34302EKV DACs from ROHM's "MUS-IC" series, configured in a dual-mono architecture. A newly adopted large crystal oscillator and an ultra-low phase-noise clock IC provide high-precision clocking, further enriching musical playback performance. The disc drive mechanism achieves quiet and smooth tray operation with a dust-proof shutter, and employs LUXMAN's proprietary LxDTM-i design, in which the transport and main chassis are integrated into a single structure. An 8 mm-thick aluminum side frame, a 5 mm-thick steel top plate and a newly added 8 mm-thick aluminum base plate ensure unwavering rigidity, competently isolating the unit from external vibrations. The final analog stage features LUXMAN's next-generation LIFES amplification feedback engine, configured for fully balanced outputs. With the adoption of Version 1.1, which improves error detection accuracy, the D-100 CENTENNIAL achieves a natural, expansive and dynamically expressive musical performance.

SPECIFICATIONS

| | |
|--------------------------------|---|
| Supported media | 2 channel SACD, CD |
| Analog output | LINE x 1, BAL LINE x 1 |
| Supported sampling frequencies | USB input (PCM) 44.1 kHz, 48 kHz, 88.2 kHz, 96 kHz, 176.4 kHz, 192 kHz, 352.8 kHz, 384 kHz, 705.6 kHz, 768 kHz (16, 24, 32 bit) USB input (DSD) 2.8 MHz, 5.6 MHz, 11.2 MHz, 22.5 MHz (1bit) COAX / OPT input 44.1 kHz, 48 kHz, 88.2 kHz, 96 kHz, 176.4 kHz, 192 kHz (16, 20, 24 bit), 2.8 MHz (DoP) |
| Digital input | USB (Type-B) x 1, COAX x 1, OPT x 2 |
| Digital output | COAX x 1, OPT x 1 |
| Output voltage / impedance | LINE 2.4 V / 300 Ω, BAL LINE 2.4 V / 600 Ω, SACD / DSD 2.3V |
| Frequency response | CD 5 Hz to 20 kHz (+0, -0.5 dB), SACD 5 Hz to 38 kHz (+0, -3 dB), USB 5 Hz to 58 kHz (+0, -3 dB) |
| Total harmonic distortion | CD 0.0016 %, SACD 0.0007 %, USB 0.0006 % |
| S/N ratio | CD 125 dB, SACD 125 dB, USB 125 dB |
| Power consumption | 44 W, 1.5 W (standby) |
| Dimensions | 440 (W) x 154 (H) x 420 (D) mm |
| Weight | 25.4 kg |

*LUXMAN Audio Player or the driver software is available for download on our website.

D-07X



Positioned in the midrange of our D Series SACD/CD players, the D-07X is a high-performance model that faithfully inherits the capabilities of our flagship D-10X. The disc drive design features LUXMAN's original highly rigid LxDTM-i mechanism, delivering exceptional structural strength and disc reading accuracy. For D/A conversion, the D-07X incorporates high-grade BD34301EKV DAC chips from ROHM's "MUS-IC" series in dual-mono configuration. When using the USB input, the unit supports PCM data up to 768 kHz / 32-bit and up to 22.5 MHz DSD signals. Full decoding and playback of MQA-CDs and MQA files is also enabled. The analog stage incorporates newly developed discrete buffer circuitry, providing strong drive capability for downstream components. The D-07X is our latest digital media player that reproduces not only musical richness but also captures the very atmosphere of a performance, delivering a deeply moving listening experience.

SPECIFICATIONS

| | |
|--------------------------------|--|
| Supported media | 2 channel SACD, CD, MQA-CD |
| Analog output | LINE x 1, BAL LINE x 1 |
| Supported sampling frequencies | USB input (PCM) 44.1 kHz, 48 kHz, 88.2 kHz, 96 kHz, 176.4 kHz, 192 kHz, 352.8 kHz, 384 kHz, 705.6 kHz, 768 kHz (16, 24, 32 bit) USB input (DSD) 2.8 MHz, 5.6 MHz, 11.2 MHz, 22.5 MHz (1bit) COAX / OPT input 44.1 kHz, 48 kHz, 88.2 kHz, 96 kHz, 176.4 kHz, 192 kHz (16, 20, 24 bit) |
| Digital input | USB (Type-B) x 1, COAX x 1, OPT x 1 |
| Digital output | COAX x 1, OPT x 1 |
| Output voltage / impedance | LINE 2.4 V / 300 Ω, BAL LINE 2.4 V / 600 Ω, SACD / DSD 2.3V |
| Frequency response | CD 5 Hz to 20 kHz (+0, -1 dB), SACD 5 Hz to 38 kHz (+0, -3 dB), USB 5 Hz to 47 kHz (+0, -3 dB) |
| Total harmonic distortion | CD 0.0016 %, SACD 0.0007 %, USB 0.001 % |
| S/N ratio | CD 122 dB, SACD 125 dB, USB 122 dB |
| Power consumption | 37 W, 1 W (standby) |
| Dimensions | 440 (W) x 132 (H) x 410 (D) mm |
| Weight | 17.0 kg |

*LUXMAN Audio Player or the driver software is available for download on our website.

D-07X Black Edition CENTENNIAL



D-03R

NEW



The D-03R is a state-of-the-art digital media player dedicated to CD playback, utilizing a high-rigidity drive mechanism alongside advanced digital processing and a fully balanced analog output stage. It is the first model to feature a dual-mono DAC configuration using ROHM's BD34352EKV. With a variety of digital inputs, including USB and network transport NT-07 connectivity, it supports PCM up to 384kHz/32bit and DSD up to 22.5MHz. The analog circuit incorporates an I/V conversion stage optimized for monaural-mode DAC operation and a custom-tuned output amplifier, delivering delicate yet expansive sound quality akin to flagship models.

SPECIFICATIONS

| | |
|--------------------------------|---|
| Supported media | CD, MQA-CD |
| Analog output | LINE x 1, BAL LINE x 1 |
| Supported sampling frequencies | USB input (PCM) 44.1 kHz, 48 kHz, 88.2 kHz, 96 kHz, 176.4 kHz, 192 kHz, 352.8 kHz, 384 kHz (16, 24, 32 bit) USB input (DSD) 2.8 MHz, 5.6 MHz, 11.2 MHz, 22.5 MHz (1bit) COAX / OPT input 44.1 kHz, 48 kHz, 88.2 kHz, 96 kHz, 176.4 kHz, 192 kHz (16, 20, 24 bit), 2.8 MHz (DoP) |
| Digital input | USB (Type-B) x 1, COAX x 1, OPT x 1 |
| Digital output | COAX x 1, OPT x 1 |
| Output voltage / impedance | LINE 2.4 V / 300 Ω, BAL LINE 2.4 V / 600 Ω |
| Frequency response | CD 5 Hz to 20 kHz (+0, -1 dB), COAX / OPT 5 Hz to 47 kHz (+0, -3 dB), USB 5 Hz to 47 kHz (+0, -3 dB) |
| Total harmonic distortion | CD 0.002 %, COAX / OPT 0.001 %, USB 0.001 % |
| S/N ratio | CD 110 dB, COAX / OPT 118 dB, USB 118 dB |
| Power consumption | 16 W |
| Dimensions | 440 (W) x 133 (H) x 410 (D) mm |
| Weight | 13.2 kg |

*LUXMAN Audio Player or the driver software is available for download on our website.

DA-07X



The DA-07X is a standalone D/A converter, refined and enhanced from the D-07X SACD/CD player, with its disc playback function removed. It incorporates the flagship D-10X's advanced digital processing circuit, featuring ROHM's BD34301EKV DAC chips in a dual-mono configuration. It supports PCM up to 768kHz/32bit and DSD up to 22.5MHz via USB. The fully balanced I/V conversion and discrete buffer circuit, which also functions as an LPF stage, drive subsequent components with unparalleled clarity and energy, delivering smooth and dynamic sound reproduction.

SPECIFICATIONS

| | |
|-----------------------------------|--|
| Type | 2 channel USB D/A converter |
| Supported sampling frequencies | USB input (PCM) : 44.1 kHz, 48 kHz, 88.2 kHz, 96 kHz, 176.4 kHz, 192 kHz, 352.8 kHz, 384 kHz, 705.6 kHz, 768 kHz (16, 24, 32-bit) USB input (DSD) : 2.8 MHz, 5.6 MHz, 11.2 MHz, 22.5 MHz (1-bit) Coaxial / Optical / AES/EBU input : 44.1 kHz, 48 kHz, 88.2 kHz, 96 kHz, 176.4 kHz, 192 kHz (16, 20, 24-bit) |
| Analog output voltage / impedance | Unbalanced : 2.4 V / 300 Ω, Balanced : 2.4 V / 600 Ω DSD format : 2.3 V |
| Frequency response | 5 Hz to 20 kHz (+0, -0.4 dB), 5 Hz to 47 kHz (+0, -3.0 dB) |
| Total harmonic distortion | Unbalanced : 0.001 %, Balanced : 0.001 % |
| S/N ratio | 124 dB |
| Power consumption | 21 W |
| Dimensions | 440 (W) x 92 (H) x 402 (D) mm |
| Weight | 12.8 kg |

NT-07



The NT-07 is LUXMAN's first network transport device, combining the latest digital audio technology with a century of LUXMAN know-how. The NT-07 embodies a thoroughly audio-focused approach to curate a wide variety of available sources with superb sound quality within a sophisticated yet comforting operational environment. In addition to USB digital audio and HDMI connectivity, streaming data from NAS and other popular music streaming services provide a variety of options for the listener to experience a new dimension of breathtaking high fidelity. The NT-07, which has been rigorously fine-tuned for supreme audio playback quality, offers all listeners a new musical experience for the future in combination with existing D/A converters.

SPECIFICATIONS

| | |
|--------------------------------|--|
| Digital input | Network : 1000 Base-T (gigabit · ethernet) HDMI : PCM 2 channel, 4K pass-through ARC (Audio Return Channel) supported |
| Digital output | USB (USB2.0), OPT, COAX HDMI : PCM 2 channel, 4K pass-through ARC (Audio Return Channel) supported |
| Storage connection | USB x 2 terminals (USB2.0, single partition, FAT32, exFAT, NTFS) |
| Supported sampling frequencies | USB : PCM 44.1 kHz, 48 kHz, 88.2 kHz, 96 kHz, 176.4 kHz, 192 kHz, 352.8 kHz, 384 kHz, 705.6 kHz, 768 kHz (16, 24, 32-bit) DSD : 2.8 MHz, 5.6 MHz, 11.2 MHz, 22.5 MHz (1-bit) COAX / OPT / HDMI (ARC) : 44.1 kHz, 48 kHz, 88.2 kHz, 96 kHz, 176.4 kHz, 192 kHz (16, 24-bit) |
| Corresponding format formats | WAV, AIFF, FLAC, ALAC, MQA, MP3, AAC, DSD (DSF, DFF) |
| Streaming protocols | UPnP (OpenHome), TIDAL Connect, Spotify Connect, Roon Ready (soon to be available) |
| Power consumption | 27 W |
| Dimensions | 440 (W) x 92 (H) x 398 (D) mm |
| Weight | 10.3 kg |

NT-07 Black Edition CENTENNIAL



P-100 CENTENNIAL



The P-100 CENTENNIAL is the first commemorative model celebrating LUXMAN's 100th anniversary, a premium headphone amplifier featuring four circuits of the LIFES amplification feedback engine. Designed for compatibility with various high-end headphones, it offers multiple output modes, including parallel, BTL, and independent ground modes. Additionally, using two P-100 CENTENNIAL units in mono mode, it enables the ultimate parallel BTL balanced output with eight amplification circuits. Equipped with a high-purity, electronically controlled 200-step, 0.5dB-step LECUA-EX attenuator, this anniversary model unlocks the full potential of premium headphones, delivering an unmatched listening experience.

SPECIFICATIONS

| | |
|------------------------------------|---|
| Rated output | Unbalanced : 4 W + 4 W (8 Ω), 2 W + 2 W (16 Ω) 1 W + 1 W (32 Ω), 53 mW + 53 mW (600 Ω) Balanced : 8 W + 8 W (16 Ω), 4 W + 4 W (32 Ω) 213 W + 213 W (600 Ω) |
| Input sensitivity/ input impedance | Unbalanced : 1.0 V / 14 kΩ Balanced : 2.0 V / 28 kΩ |
| Total harmonic distortion | Unbalanced : 0.0025 % (1 kHz), Balanced : 0.0015 % (1 kHz) |
| Frequency response | 20 Hz to 20 kHz (+0, -0.1 dB), 10 Hz to 175 kHz (+0, -3.0 dB) |
| S/N ratio (IHF-A) | Unbalanced : 117 dB, Balanced : 119 dB |
| Power consumption | 67 W, 47 W (under no signal) |
| External dimensions | 446 (W) x 136 (H) x 401 (D) mm |
| Weight | 19.7 kg |

COAXIAL LINE SELECTOR

AS-44



The AS-44 is a passive, high-quality audio selector that can switch up to four audio devices over an RCA network. To match high-end separate amplifiers, the unit is of the highest quality, with a highly rigid aluminum housing. All the internal wiring is 6N (99.99997 % pure) copper wire, purity retains quality and prevents information loss. The RCA terminals are also plated with highly pure gold. There is no compromise in sound quality considerations. This unit can be used as a source selector for switching between CD players, tuners, and D / A converters, or as an amplifier selector that switches and shares one source with multiple amplifiers.

SPECIFICATIONS

| | |
|------------|-------------------------------|
| Dimensions | 370 (W) x 71 (H) x 136 (D) mm |
| Weight | 2.4 kg |

SPEAKER SELECTOR

AS-55



The AS-55 is a speaker terminal type, passive, high-quality audio selector that can switch between three speaker outputs. The high quality construction matches high-end separate amplifiers, with a highly rigid aluminum housing, 20 A rotary switch to select output signals and 6N (99.99997 % pure) copper wire used for internal connections. Bare wire, spade or banana plugs can be connected to these high grade speaker output terminals. Using this unit enables the listener select between three amplifier inputs for three separate speaker systems.

SPECIFICATIONS

| | |
|------------|-------------------------------|
| Dimensions | 370 (W) x 71 (H) x 164 (D) mm |
| Weight | 3.0 kg |

SPEAKER SELECTOR

AS-50R (リモコン対応)



The AS-50R is a speaker terminal type audio selector which enables switching between three speaker outputs and also supports remote control operation. Switching is made possible by using a 5 A, high capacity speaker relay that is discretely controlled by the main unit or the included remote control. You can switch between multiple systems comfortably while in your listening position. By changing the ID setting of the main unit, up to four AS-50Rs can be operated with one remote control, and it is possible to build an advanced system that can select multiple speakers and amplifiers in all directions.

SPECIFICATIONS

| | |
|------------|-------------------------------|
| Dimensions | 297 (W) x 75 (H) x 120 (D) mm |
| Weight | 1.8 kg |

COAXIAL LINE SELECTOR

AS-4 (Ⅲ)



An input signal switching box with four pairs of RCA terminals

SPECIFICATIONS

| | |
|------------|------------------------------|
| Dimensions | 160 (W) x 65 (H) x 95 (D) mm |
| Weight | 530 g |

SPEAKER SELECTOR

AS-5 (Ⅲ) (with headphone terminal)



Speaker output signal switching box

SPECIFICATIONS

| | |
|------------|------------------------------|
| Dimensions | 240 (W) x 65 (H) x 95 (D) mm |
| Weight | 750 g |

AUDIO CABLE / ULTIMATE 15000 SERIES

Our 15000 series line cables feature large diameter core wire utilizing highly-pure 7N CLASS D.U.C.C. (99.99998%+pure copper) to ensure lower impedance. LUXMAN's original techniques, such as the non-twisted structure and binding hot and cold lines in parallel to eliminate unwanted inductance, integrated bound structure for the Left and Right channels to minimize unwanted ground loops and individual shielding for hot and cold transmission lines reducing line-to-line capacitance by half are also featured to yield an unconstrained and lively sound.



JPC-15000

Wire length 1.3m XLR type
High-purity 7N-Class D.U.C.C.
(99.99998 % or more copper) conductor
+ high-purity oxygen-free copper (OFC) conductor



JPR-15000

Wire length 1.3m RCA type
High-purity 7N-Class D.U.C.C.
(99.99998 % or more copper) conductor
+ high-purity oxygen-free copper (OFC) conductor



JPS-15000/2

Wire length 2.0m speaker cable (Spade plug)
High-purity 7N-Class D.U.C.C.
(99.99998 % + pure copper) core
+ High-purity oxygen-free copper (OFC)

*JPS-15000 comes in 2m



JPC-15000PH

Phono cable
Wire length 1.5m 5-pin DIN→XLR type
High-purity 7N-Class D.U.C.C.
(99.99998 % + pure copper) conductor



JPR-15000PH

Phono cable
Wire length 1.5m 5-pin DIN→RCA type
High-purity 7N-Class D.U.C.C.
(99.99998 % + pure copper) conductor

AUDIO CABLE / ULTIMATE 10000 SERIES



JPC-10000

Wire length 1.25m / XLR type /
High-purity 6N (99.99997 % copper) conductor



JPR-10000

Wire length 1.25m / RCA type /
High-purity 6N (99.99997 % copper) conductor

AUDIO CABLE / REFERENCE SERIES



JPC-150

Wire length 1.5m XLR type /
High-purity oxygen-free copper (OFC) conductor

JPC-100

Wire length 1.0m XLR type /
High-purity oxygen-free copper (OFC) conductor



JPR-150

Wire length 1.5m RCA type /
High-purity oxygen-free copper (OFC) conductor

JPR-100

Wire length 1.0m RCA type /
High-purity oxygen-free copper (OFC) conductor



JPS-100

50 m speaker cable reel
Oxygen Free Copper (OFC) conductor

AUDIO USB CABLE



JPU-150C

Wire length 1.5m Reference USB cable
high-purity oxygen-free copper (OFC) conductor
USB Type-C → Type-B terminal configuration



JPU-150

Wire length 1.5m Reference USB cable
high-purity oxygen-free copper (OFC) conductor
USB Type-A → Type-B terminal configuration

TERMINAL PLUG



JPB-10

Banana plug (4 plugs, boxed)
Machined solid brass
24 K gold-plated



*LECUA stands for Luxman Electronically Controlled Ultimate Attenuator *ODNF-u stands for Only Distortion Negative Feedback - ultimate
*LIFES stands for Luxman Integrated Feedback Engine System *LECUA stands for Luxman Electronically Controlled Ultimate Transformer Attenuator
*The SAEC brand is owned by Saec Commerce Co., Ltd. *D.U.C.C. is a registered trademark of Mitsubishi Materials Corporation.
*LxDTM-i stands for Luxman original Disc Transport Mechanism - improved *MUS-IC is a registered trademark of ROHM CO., Ltd. *Bulk Pet is a registered trademark of Interface Co., Ltd. *DSD is a registered trademark
*Sound Wave Logo is a registered trademark of Lenbrook Industries Ltd (c)2023 *MQA is a registered trademark of Lenbrook Industries Ltd (c)2023
*Apple, Mac, Mac OS, OS X, macOS and Macintosh are trademarks of Apple Inc., registered in the U.S. and other countries
*Microsoft and Windows are registered trademark of Microsoft Corporation in the U.S. and/or other countries
*IOS is a trademark of registered trademark of Cisco in the U.S. and other countries and is used under license *App Store is a service mark of Apple Inc.
*Android is a trademark of Google Inc. *Google Play is a trademark of Google Inc.

LUXMAN

LUXMAN CORPORATION, 1-3-1 Shinyokohama, Kouhoku-ku, Yokohama-shi, Kanagawa 222-0033, Japan
Tel: +81-45-273-5286 Fax: +81-45-470-6997 www.luxman.com
LUXMAN reserves the right to alter the design and specifications without notice.
All rights reserved LUXMAN CORPORATION



Safety Cautions

To ensure correct use of this product,
read the "Owner's Manual" prior to use.
Failure to follow all safeguards can result
in fire, electric shock, or other accidents.