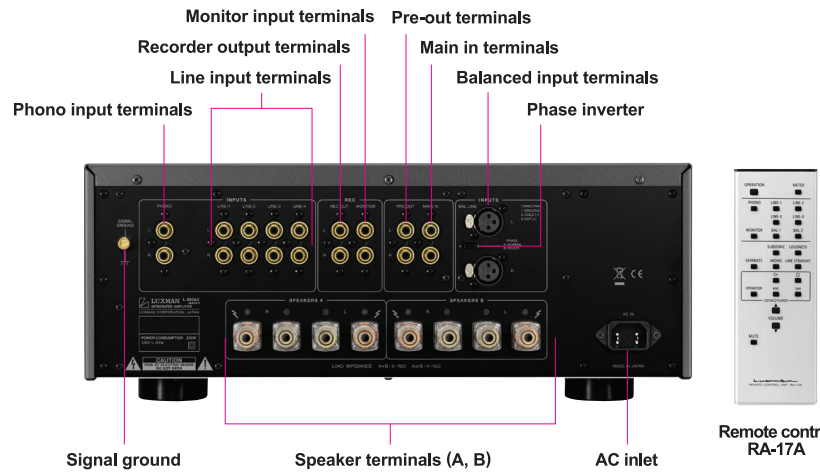
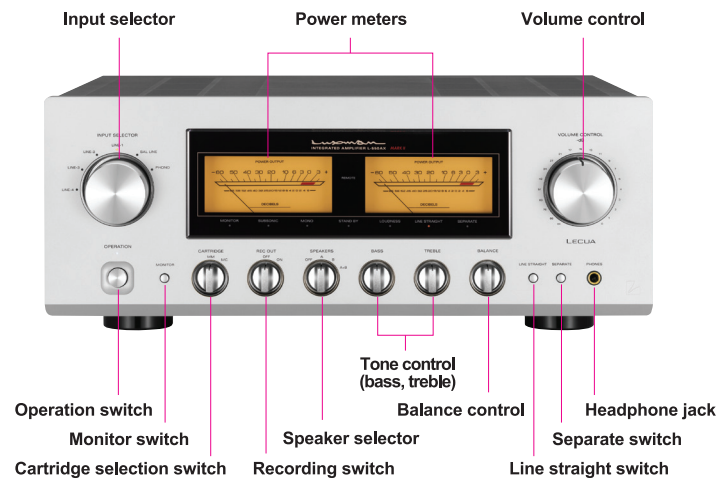
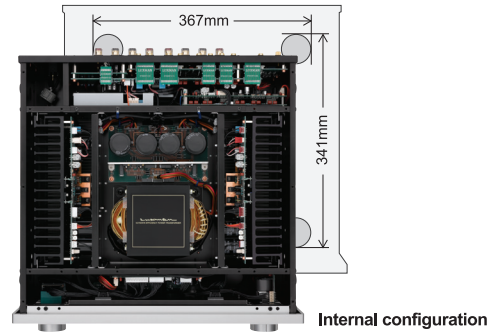


SPECIFICATIONS

Rated output	20W + 20W (8Ω), 40W + 40W (4Ω)
Input sensitivity/ input impedance	PHONO (MM): 2.5mV/47kΩ PHONO (MC): 0.3mV/100Ω LINE: 180mV/47kΩ BAL.LINE: 180mV/55kΩ MAIN-IN: 450mV/47kΩ
Output voltage	RECOUT: 180mV, PRE OUT: 1V
Frequency response	PHONO: 20Hz to 20kHz (±0.5dB) LINE: 20Hz to 100kHz (+0, -3.0dB)
Total harmonic distortion	0.007% or less (8Ω, 1kHz) 0.02% or less (8Ω, 20Hz to 20kHz)
S/N ratio (IHF-A)	PHONO (MM): 91dB or more, PHONO (MC): 75dB or more LINE: 105dB or more
Volume adjustment	New LECUA1000
Amplification circuit	ODNF 4.0
Output configuration	Bipolar parallel push-pull
Damping factor	200
Max. amount of tone control	BASS: ±8dB at 100Hz TREBLE: ±8dB at 10kHz
Power supply	230V~(50Hz) / 115V~(60Hz)
Power consumption	230W 170W (under no signal), 0.5W (at standby)
External dimensions	440(W) x 178(H) x 454(D) mm front side knob of 20mm and rear side terminal of 27mm included in depth
Net weight	24.3kg (main unit)
Accessories	Remote control (RA-17A) Power cable
Speaker terminal	Width of part a: 15mm or less
Supported Y-lug terminal dimension	Width of part b: 8mm or more

* Connection may not be performed depending on the shape of the Y-lug terminal.



*Rear panel : European Model

SUPER AUDIO CD PLAYER
D-05u



SPECIFICATIONS

Applicable disc	2-channel SACD, CD
Supported sampling frequencies	USB input (PCM) : 32k, 44.1k, 48k, 88.2k, 96k, 176.4k, 192k (16, 24, 32bits) USB input (DSD) : 2.82M, 5.64MHz (1bit) COAX/OPT input : 32k, 44.1k, 48k, 88.2k, 96k, 176.4k, 192kHz (16, 20, 24bits)
Analog output voltage / impedance	2.5V/300Ω (unbalanced), 600Ω (balanced)
Frequency response	CD 5Hz to 20kHz (+0, -0.5dB) SACD 5Hz to 50kHz (+0, -3.0dB) USB 5Hz to 50kHz (+0, -3.0dB)

Total harmonic distortion	CD 0.0015%, SACD 0.0015%, USB 0.0009%
S/N ratio (IHF-A)	CD 122dB, SACD 102dB, USB 123dB
Disc drive mechanism	LxDTM
D/A converter	Burr-Brown-made PCM1795 (monaural mode) x 2
Output amplifier circuit	Fully balanced/high sound quality IC buffer
Power supply	230V~(50Hz) / 115V~(60Hz)
Power consumption	26W 1W (at standby)
External dimensions	440(W) x 133(H) x 410(D) mm front side knob of 2mm and rear side terminal of 8mm included in depth
Net weight	14.8kg(main unit)

BELT DRIVE ANALOG PLAYER
PD-171A



* This product is supplied with a dust cover.
** No cartridge is included.

SPECIFICATIONS

■ Turntable	
Drive system	Belt drive system
Motor	Reaction and AC synchronous motor Motor power supply: Quartz oscillation amplifier
Material	Machined aluminium plate, Surface finish: Diamond cut
Rotation speed	33 1/3 rpm, 45 rpm switch type, Rotation speed adjustment: ±5 %
Wow and flutter	0.04 % or less (W,R,M,S)
Weight	5.0 kg (platter)

■ Tone arm	
Format	Static balance, S-type
Bearing	One point cross suspension
Effective length	229 mm
Overhang	15 mm, tracking error: +1.9° to -1.1°
Applicable cartridge weight	4 to 12 g (17 to 25 g headshell included)
Adjustable height range	38 to 60 mm
Anti-skating	0 to 3 g
■ Main unit	
Power supply	230V~(50Hz) / 115V~(60Hz)
Power consumption	38W
External dimensions	492(W) x 140(up to top surface of turntable) 195(at dust cover in use) (H) x 407(10 mm of rear fittings included) (D) mm
Net weight	25.4 kg(main unit)



* DSD is a registered trademark. * The described company names and product names are trademarks or registered trademarks of each company.
* Specifications and appearance are subject to change without notice. * The products listed in this catalog do not include line cables. Please purchase cables separately.



Safety Cautions

To ensure correct use of this product, read the "Owner's Manual" prior to use. Failure to follow all safeguards can result in fire, electric shock, or other accidents.

A pure class A design transformed into a MKII model Capable of optimising sound density

Pursuing a sound that appeals to the senses whilst creating a deep musical impression is the ultimate role of the audio amplifier.

With pure class A design, the L-550AXII integrated amplifier is a refined version of the L-550AX which was itself fully restyled in 2011.

The MK II model boasts improved functionality with the latest technologies equivalent to the higher grade L-590AXII such as Version 4.0 of the original amplification feedback circuit ODNF, the new LECUA1000, computerized attenuator, and a buffer circuit with discrete configuration as standard.

Such features result in a model with capability of expression above its class, offering a mellow and dense sound that only pure class A amplification can create.

The L-550AXII is a mid-range integrated amplifier that increases its maturity in an attractive, functional design for music to be thoroughly enjoyed.



■ The new LECUA1000 computerized attenuator

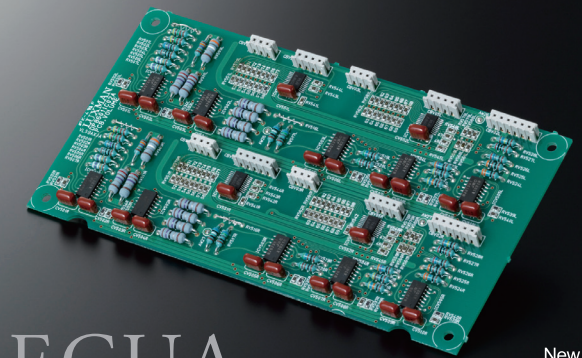
A pre-amplifier circuit-integrated computerized attenuator, new LECUA* 1000, equivalent to that used in the higher grade L-590AXII model is mounted in the volume adjustment unit, playing a critical role in the pre amplifier section. The renovation was made to the buffer circuit input stage to allow smooth volume adjustment in 88 steps thereby minimizing the deterioration of sound quality. Additionally, a 3D layout has been introduced in the new LECUA1000 allowing the substrates to be placed in three dimensions. The attenuator circuit is connected directly to the amplification circuit to make the shortest signal routes and improve efficiency. The LECUA1000 has exceptional durability and is capable of controlling the changes in sound quality that may occur due to external vibrations or sound volume adjustment.

*LECUA is an abbreviation of Luxman Electric Controlled Ultimate Attenuator.

■ ODNF version 4.0 an innovative amplification feedback circuit

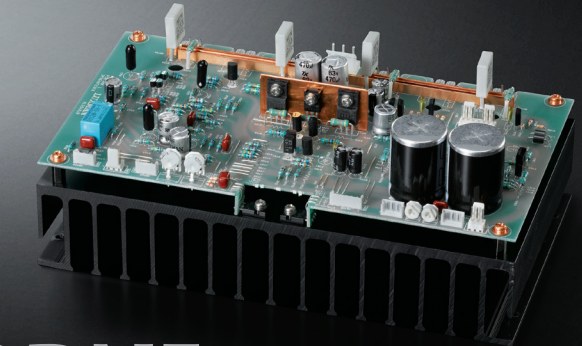
The ODNF*, LUXMAN original amplification feedback circuit, features a fast primary slew rate and an ultra-wide bandwidth achieved through the feedback of distortion components only from the output signals. The L-550AXII is equipped with the latest version of ODNF - Version 4.0 - in which the distortion characteristics at high frequencies as well as the S/N performance have been significantly improved. Version 4.0 ODNF also features a large scale power amplifier with a parallel push pull structure where 3 stage Darlington is used. Both of these features are inherited from the M-700u power amplifier and the higher grade integrated L-590AXII. A rated output of 20W +20W (8Ω) of pure class A amplification achieves a mellow, expressive sound with a heightened sense of density with high drivability to speaker systems.

*ODNF is an abbreviation for "Only Distortion Negative Feedback".



LECUA

New amplifier-integrated LECUA 1000 substrate

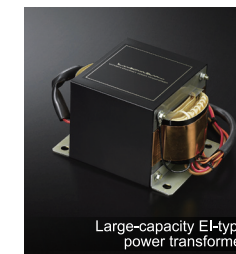


ODNF

Power Amplifier block of parallel module ODNF version 4.0

■ Large-capacity power supply circuit

A high-inertia power supply circuit that combines a large capacity EI core type power transformer (to which a vibration control feature has been newly added) and a large capacitor block (10,000uF x4) is an integral part of the L-550AXII. This large capacity power supply circuit supports the sound dynamics of the unit by enhancing stability at the core of the design.



Large-capacity EI-type power transformer

■ Customised parts making sound quality the priority

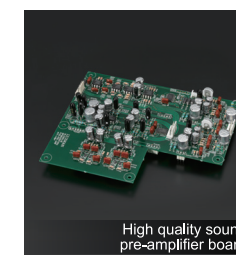
Original LUXMAN OFC wires are used in the internal wiring of the L-550AXII achieving a smooth signal transmission due to the spiral wrap shielding on each core and the non-plating process on the core wire. The L-550AXII is designed introducing many custom-built parts and sophisticated technologies including newly developed high sound quality, low height block capacitors.



Newly developed low-height block capacitor

■ Discrete buffer circuit

A discrete buffer circuit that is the equivalent to those used in the top end LUXMAN C-900u separate amplifier is mounted on the output stage of the pre-amplifier circuit. This protects the purity of the audio signals whilst simultaneously enhancing the drive force for the power amplifier.



High quality sound pre-amplifier board

■ Abundant functions

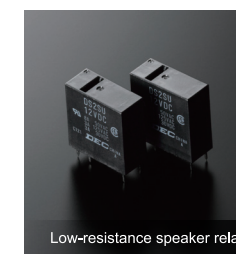
The L-550AXII is equipped with a fully-fledged phono amplifier that is compatible with MM/MC cartridges. The front panel features multiple functions such as bass/treble tone control, LR balance adjustment, a pre/power separation switch. A loudness function interlocking with the sound volume is operable by the remote control.



Separate switch

■ Low impedance transmission

The large capacity, low resistance speaker relays are connected in parallel in order to transmit the powerful drive force that is generated by the high inertia power supply circuit and the large scale output circuit without loss. Connecting directly to the speaker terminals in this way significantly improves the damping factor from 160 to 200.



Low-resistance speaker relay

■ Improved operability and functionality

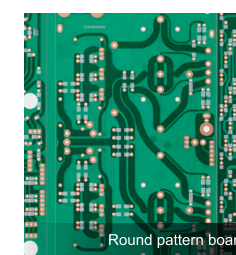
The front panel features a newly designed, highly visible meter panel that expresses the identity of the MK II model with a 'pointer type', LED lit analog meter. The tactile machined aluminium control knobs enable greater accuracy of selection.



Machined aluminum knobs

■ Proprietary technologies

The L-550AXII is designed using proprietary technology and customised parts to optimise the sound quality of this integrated amplifier. For example, the round pattern board enabling smooth signal transmission, and a Bee-line construction configuring the optimal parts locations and the shortest signal routes. In addition to this, the loopless chassis structure minimizes the ground impedance increase.



Round pattern board

■ Other features

Inline-layout large speaker terminals are used on the rear panel to facilitate ease of wiring. The high grade, aluminium encased remote control is supplied as standard.



Remote control