

LUXMAN

BELT DRIVE ANALOG PLAYER
(ARMLESS TYPE)

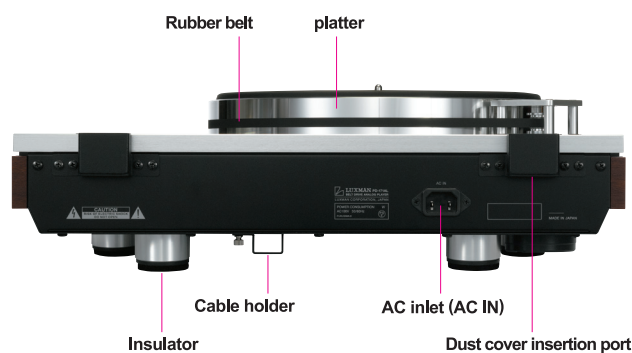
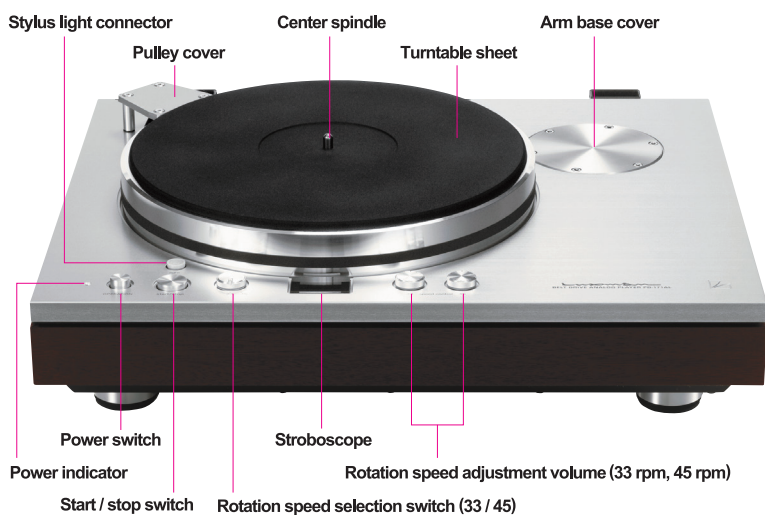
PD-171AL



Tonearm setup image
(ex. SME 3010R)



Arrival of armless type, pursuing possibility of analog reproduction



Since the introduction of PD-171 into the market in 2011, which has been highly admired as an analog player that delivers the temperature sense and atmosphere sense of sound put into a phonograph record, and now the longed-for armless type has arrived. Highly evaluated physical characteristics of PD-171 such as high-rigid main chassis and heavy turntable securing stable rotation are inherited, and the mechanisms of the motor, drive circuit, and bearing section have been improved for further accuracy. PD-171AL is an analog player, and an audio component that the user can customize to allow for enjoying sound change. Setting PD-171AL to an armless type allows the user to appreciate analog reproduction more deeply. This sentence is written to express the image of letter entry and has nothing to do with the contents of the catalog.

■ Electric circuit

- Introduction of newly developed high-torque AC motor
- AC synchronous motor drive with use of the circuit of high power audio amplifier structure
- High-precision clock controlled generator circuit with 32-bit microprocessor embedded
- Reflective view type LED stroboscope useful for adjusting the rotation speed in a precise manner equipped

■ Mechanism

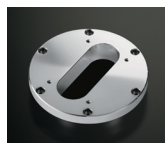
- Belt drive type aluminum machining heavy turntable (5.0kg) utilizing high inertia moment (approx. 0.7t·2)
- Main parts underslung (hanging) vibration-damping structure with the main chassis of 15-mm-thick machined aluminum plate
- High-rigid 16 mm spindle with ball bearing to support stable rotation
- Wear-resistant and load-bearing polyether ether ketone (PEEK) material used in the bearing section
- Floating mounted power transformer and AC motor
- Hybrid vibration-damping structure with wood and metal
- Large-sized insulator with height adjustment function directly secured to aluminum chassis

■ Exterior

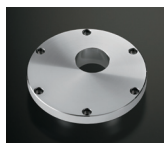
- Traditional wood-paneled design
- AC inlet on the rear panel to allow for replacement of power cable
- Detachable high-intensity LED type stylus light useful for playback of a phonograph record in a dark listening room supplied
- Cam support type 4-mm-thick acrylic dust cover openable and closable by light operation supplied

■ PD-171AL-specific arm base

- 20-mm-thick brazen chromeplated, spin finish



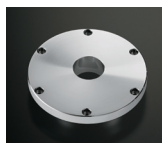
For SME 3009R/3010R and other 9inch, 10inch tonearms
OPPD-AB1



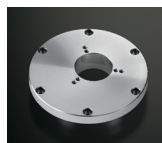
For FR 64/64S/64FX IKEDA IT-345
OPPD-AB2



For SAEC WE-308
OPPD-AB3



For SAEC WE-407/23
OPPD-AB4



For ORTOFON 212S/212D
OPPD-AB5

SPECIFICATIONS

■ Phono motor section

Drive system	Belt drive system
Motor	Reaction and AC synchronous motor
Motor power supply	Quartz oscillation amplifier
Platter	30cm machined aluminum plate (weigh 5.0kg)
Rotation	33 1/3rpm, 45rpm (2 speeds selectable)
Rotation adjustment range	±5% (each rotation speed adjustable independently)
Wow and flutter	0.04% or less (W.R.M.S)
Weight (Platter)	5.0kg

■ Power source and others

Power source	230V~ (50Hz)
Power consumption	38W
Dimensions	492 (W) × 140 (up to top face of platter), 195 (with dust cover mounted) (H) × 407 (10mm of fittings on rear face included) (D) mm
Net weight	23.8kg
Accessories	<ul style="list-style-type: none"> • Platter • Dust cover • Rubber belt • Pulley cover • Turntable sheet • Arm base cover • Arm base cover removal wrench (3.0mm) • Phono cable securing cushions (3types) • Dustproof cap for stylus light connector • Power cable • Stylus light • EP adaptor • Platter mount handle (2pieces)

* No tone arm or cartridge is included in this unit.

LUXMAN

IAG House, 13/14 Glebe Road, Huntingdon, Cambridgeshire, PE29 7DL, UK
Tel: +44 (0) 1480 452561 Fax: +44 (0) 1480 413103 <http://www.luxman.com>

ラックスマン株式会社 〒222-0033 神奈川県横浜市港北区新横浜1-3-1
Tel.045-470-6991 Fax.045-470-6997 www.luxman.co.jp

IAG reserves the right to alter the design and specifications without notice. All rights reserved IAG Group Ltd.
Luxman is a member of the International Audio Group. Code: LN14-LL0003



Safety Cautions

To ensure correct use of this product, read the "Instruction Manual" prior to use. Failure to follow all safeguards can result in fire, electric shock, or other accidents.

*Design and specifications are subject to change without notice.